

CURRICULUM BOOKLET 2024-25



Aspire ACHIEVE Thrive

OUR SCHOOL VALUES

YEAR 10 THE TERM AHEAD
for students, parents and carers

THE TERM AHEAD



As we come to the end of our first half term, we wanted to share some reflections on this year so far, but also look forward to the term ahead. This is our new curriculum newsletter for parents which details what your child can expect in the term ahead, as well as what they will be studying in lessons. We know that parental engagement can have a positive impact on a child's progress, outcomes and success, both in terms of their academic achievements but also their personal development. We hope this newsletter enables parents to know a little more about what their child is doing each day in school; to promote engaging conversations at home about topics they are learning about; to help revision on the run up to assessments; and to provide a stronger link between school and home.

Your child's tutor is always your first point of contact, so we have included their details within this booklet, as well as the clubs that are available and a reminder of the homework timetable and some examples of excellent homework.

These curriculum newsletters will be sent out to parents/carers before the end of each term, outlining the coverage for the term ahead. The next booklet will be sent in December and cover the whole of the Spring Term; then again in March to cover the Summer Term.

We've had a fantastic start to the academic year and we're looking forward to continuing this after October half term.

I hope you all have a lovely half term.

Mr Oakes
Head of School

I am delighted to report that our Year 10 students have made an outstanding start to their first term! They have quickly settled into the rhythm of the new academic year, demonstrating the level of maturity and responsibility expected at this stage of their school journey.

Having carefully selected their option subjects, students are fully engaged in their studies and are already enjoying the challenge and variety that comes with pursuing their personal interests. Teachers have noted the enthusiasm and commitment with which they are approaching their coursework, homework and classwork, showing a positive attitude towards learning.

In addition to their academic efforts, many Year 10 students have also embraced the opportunities offered by our extra-curricular clubs. We are thrilled to see a high level of participation, with students trying new activities and returning to established favourites. A special mention goes to those who have enrolled or re-enrolled in the Duke of Edinburgh Silver Award scheme, reflecting their ambition and desire to develop important life skills beyond the classroom.

Overall, it has been a fantastic start for Year 10, and we look forward to seeing their continued progress and success throughout the year!

Mr Harris
Head of Year 10

KEY DATES

Monday 11th November
SDCC Remembrance Service

Thursday 14th November
Year 10 Parents Evening

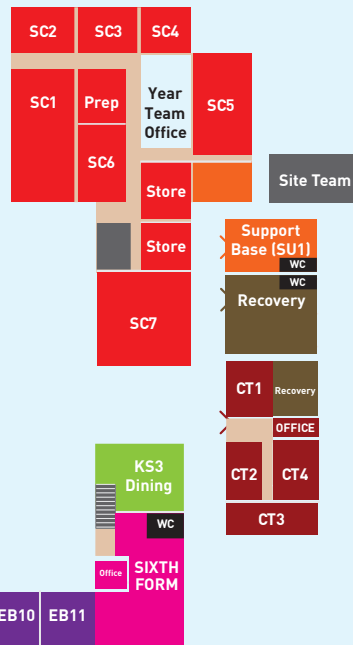
Friday 15th November
Children in Need

Friday 20th December
End of Term

Ground Floor



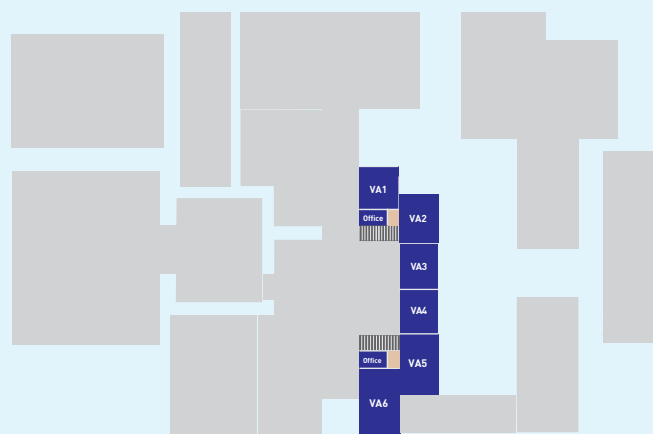
SDCC MAP



First Floor



Second Floor



Please feel free to contact your child's tutor at any time by phone or email if you have any queries, whether this be pastoral, academic or a general enquiry.

Tutor: to email, use staff initial and surname @sdcc-smhc.net for example mhussey@sdcc-smhc.net

YEAR 10 TUTORS

Head of Year: Mr Harris						
Tutor Group	Tutor	Room		Tutor Group	Tutor	Room
101	S Schmidt	EB12		107	A Clift	EB18
102	S Burroughs	EB13		108	P Harrison	EB1
103	J Fisher/L Matthews	EB14		109	H Richards	EB2
104	R Turner	EB15		1010	J Gratton	EB3
105	L Tanner	EB16		1011	H Spear	SC6
106	K Booth	EB17				



GREENSHAW
LEARNING TRUST

S

**STOKE
DAMEREL**

Tutor Time Reading Programme YEAR 10

Students complete
20 minutes of reading
each morning, giving
them an experience of
a wide range of texts

TITLE

AUTHOR

A Long Way Gone	Ishmael Beah
Brave New World	Aldous Huxley
Circe	Madeline Miller
Code Name Verity	Elizabeth Wein
Flowers for Algernon	Daniel Keyes
Great Expectations	Charles Dickens
Hamnet	Maggie O'Farrell
Hitchhiker's Guide to the Galaxy	Douglas Adams
I Am Legend	Richard Matheson
Long Walk to Freedom	Nelson Mandela
Never Let Me Go	Kazuo Ishiguro
Saint Death	Marcus Sedgwick
Sophie's World	Jostein Gaarder
The Great Gatsby	F.Scott. Fitzgerald
The Help	Kathryn Stockett
The Kite Runner	Khaled Hosseini
The Strange Case of Dr. Jekyll and Mr. Hyde	Robert Louis Stevenson



CURRICULUM OVERVIEW

SDCC Year 10 Curriculum	HALF TERM 2
Maths	<p>Foundation: Students develop fluency with complex algebraic concepts and their application to problems.</p> <p>Higher: Students understand irrational numbers and are able to understand and manipulate Surds. They are also able to build on algebraic fluency to delve into more complex applications with simultaneous equations and rearranging formula</p>
English Language & Literature	A Christmas Carol' by Charles Dickens. Students consider the context of Victorian London, themes such as transformation and redemption and social responsibility.
Combined Science	<p>Biology: Structure of the heart and lungs</p> <p>Chemistry: Crude oil and fuels</p> <p>Physics: Resistance in circuits</p>
French	From the town to the countryside Describing towns and regions.
Geography	<p>Urban Change in the UK</p> <p>Where people live in the UK, Bristol (opportunities and challenges), greenfield and brownfield developments and Temple Quarter regeneration. Students develop their understanding of the process of urbanisation from a UK perspective. A significant study of Bristol increases locational knowledge and cultural capital. This includes a fieldwork opportunity to visit Bristol.</p>
History	Henry and his Ministers - looks at the role of Wolsey both home and abroad
Art	<p>Students then look at various artists and explore the materials and techniques they used to develop their skills and produce creative outcomes for their coursework.</p> <p>Ian Murphy - Mixed media, pen & ink.</p> <p>Lucy Jones - Mixed media and monoprinting.</p>

CURRICULUM OVERVIEW

Computer Science	<p>1.2 Memory and Storage</p> <p>Students will begin by investigating the difference between primary storage (memory) and secondary storage (storage). Students will investigate the differences between RAM and ROM and how virtual memory is used in computing systems. Students will begin to investigate the common types of storage (Optical, Magnetic and Solid-State) and their characteristics. Students will learn about the units of storage (bits, bytes, kilobytes, etc) and how to convert between these units of storage. They will then investigate how data is encoded and stored as binary in computer systems. This will include numbers, characters, images and sound. Students will investigate how compression is used and the difference between lossy and lossless compression.</p> <p>Practical Programming</p> <p>Students will learn how to use selection statements, with an introduction to boolean operators.</p>
IT	<p>Component 1B Use project planning techniques to plan and design a user interface</p> <ul style="list-style-type: none"> - Project planning techniques - Creating a project proposal and plan - Creating an initial design
Drama	<p>Comp 1: Looking at genres and styles through a range of professional repertoire including <i>Frankenstein with a focus on Stanislavski's naturalistic approach</i>. Students will develop their understanding of roles within the performing arts and how the various disciplines unite to create a production. Supporting evidence: Portfolio doc and practical workshops</p>
Food Technology/Catering	<p>To understand contracts, holiday and sick pay. To know the types of costs that a business would have. To evaluate the importance for a commercial business to manage finances correctly. To explain how menu planning is linked to helping the environment. To be able to explain the advantages and disadvantages of different types of technology within the hospitality and catering sector</p>
Music	<p>Btec Music - Component 1 Students look at a variety of genres and select 4 to research in detail. The brief set by Btec also includes a composition task, in which all students must compose 3 x 60 second pieces in response to their preferred genres they have researched in component 1.</p>

CURRICULUM OVERVIEW

PE and Health	Explore what is required to be able to prepare participants to take part in physical activity
PSE/RSE	RSHE students will focus on the Human Rights and Social Justice taking into account the religious views of Christianity and Islam. Students will explore the attitude to wealth, exploitation of the poor and look at the judiciary system/laws on how criminals are treated.
Business	Investigation into the importance of businesses carrying out Market Research and identifying market segmentation. Students needs focus around the competitive environment. Students then learn about financial and non financial objectives for starting up a business. Attention then focuses on understanding the financial aspect of running a business.
Child Development	In this half term students will continue to work on their PSA tasks improving them after they have had an initial mark by their teacher. In December they will start lessons on Component 2 where they will explore learning through play.
Health and Social Care	In this half term students will continue to work on their PSA tasks improving them after they have had an initial mark by their teacher. In December they will start lessons on Component 2 they will explore health and social care services.
Media	Film language, media production and narrative theories applied to media texts; Genre and Representation theories; Comparative analysis of 2 moving image texts, 2 print media texts and 2 interactive media texts
Photography	Introduction to Photography - Whilst exploring the formal elements of Photography. The students will gain an understanding of basic camera skills and exploring digital and manual editing.
Travel and Tourism	Component 1B: Students will also explore types of travel and tourism, the features that make destinations appealing to visitors and different travel routes. Students will complete a completing a piece of coursework on one specific destination.

HOME LEARNING - KS4

EVERY MOMENT
MATTERS

WE ARE
#TEAM SDCC

Year 10 Homework Timetable

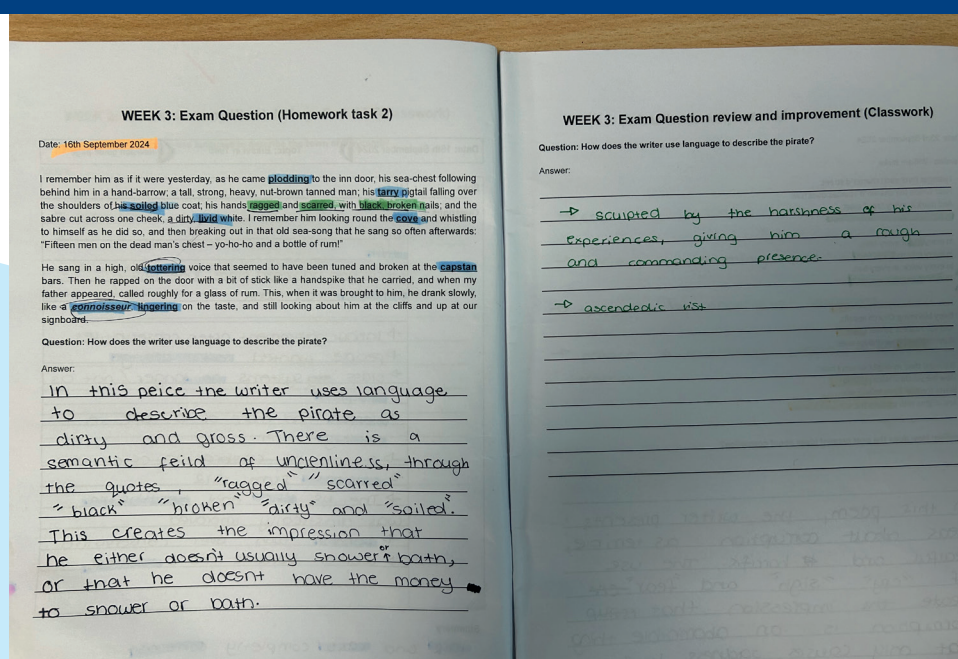
Monday	English Task 1	Ebacc Option A Task 1	Option C Task 1
Tuesday	Option B Task 1	Sparx Science	Science Task 1
Wednesday	Sparx Maths	Option C Task 2	Sparx Science
Thursday	Ebacc Option A Task 2	Sparx Maths	Option B Task 2
Friday	Sparx Science	Science Task 2	English Task 2

Support is available:

Students are supported with their written homework each morning during their tutor sessions, but additional support for homework can be found in En1 before school starts.

Support for online Homework takes place each break-time in En4, and after school for each of the Core subjects.

KS4 HOMEWORK EXAMPLE



CLUBS

AUTUMN 2024



EVERYDAY

FOOTBALL

Who? All years | *Where?* Astro
When? Before School

CAMPUS RADIO

Who? All years | *Where?* TBC
When? Break A & B

MONDAY

ROCK CLUB

Who? All years | *Where?* PA 2
When? 3-4pm

SIGN LANGUAGE

Who? All years | *Where?* GF01
When? Break A

PRODUCTION DANCE

Who? All years | *Where?* PA1
When? 3.10-5pm

MONDAY, TUESDAY, THURSDAY & FRIDAY

BADMINTON CLUB

Who? All years | *Where?* Sports hall
When? Break A

MONDAY, TUESDAY & FRIDAY

BASKETBALL/NETBALL

Who? All years | *Where?* Sports hall
When? Break B

TUESDAY

SDCC SINGERS

Who? All years | *Where?* PA4
When? 3-4pm

CONTEMPORARY MUSIC CLUB

Who? KS4 Musicians
(on BTEC course) | *Where?* PA2
When? 3-4pm

COOKING CLUB

Who? Years 7 & 8 | *Where?* Fn1
When? 3-4pm

RUGBY

Who? All years | *Where?* Astro/Central Park
When? 3.10-4pm

NETBALL

Who? Years 7 & 8 | *Where?* Sports Hall/
Netball Courts
When? 3.10-4pm

FOOTBALL

Who? Year 9 | *Where?* Astro
When? 3.10-4pm

TEXTILES: DIY FASHION

Who? All years | *Where?* VA2
When? 3.10-4pm

DIGITAL AMBASSADORS

Who? All years | *Where?* CT2
When? 3.10-4pm

MONEY MATTERS

Who? Years 8-13 | *Where?* EB12
When? 3.10-4pm

ECO COUNCIL

Who? Years 7-13 | *Where?* EB15
When? Break B

PRODUCTION ACTING

Who? All years | *Where?* Theatre
When? 3.10-5pm

MODERN BRITAIN

DEBATING CLUB

Who? All years | *Where?* EB10
When? 3.10-4pm

THE CONTEMPORARY MUSIC CLUB

Who? Years 9-11 | *Where?* PA2
When? 3.15-4.15pm

POKEMON

Who? All years | *Where?* CT1
When? Break B

TUESDAY & WEDNESDAY

FITNESS

Who? Years 7 & 8 | *Where?* FT1
When? 3.10-4pm

TUESDAY, WEDNESDAY & THURSDAY

HOMEWORK

Who? Years 7, 8 & 9 | *Where?* Study Zone
When? 3.10-4pm

FITNESS SUITE

Who? Years 9 & 10 | *Where?* Fitness Suite
When? 3.10-4pm

WEDNESDAY

NEEDLE POINT

Who? All years | *Where?* Ma9
When? 3-4pm

NETBALL

Who? All years | *Where?* Netball Courts
When? 3.10-4pm

BASKETBALL

Who? Years 7, 8 & 9 | *Where?* Sports Hall
When? 3.10-4pm

FOOTBALL

Who? Years 7 | *Where?* Astro
When? 3.10-4pm

ART AND CLAY CLUB

Who? All years | *Where?* VA3
When? 3.10-4pm

PHOTOGRAPHY CLUB

Who? All years | *Where?* VA1
When? 3.10-4pm

PRODUCTION SINGERS

Who? All years | *Where?* PA2
When? 3.10-4.30pm

PARAGON MATHS

Who? Years 7 & 8 Week A
Years 9 & 10 Week B | *Where?* MA5
When? 3.10-4pm

MINDFULNESS CLUB

Who? All years | *Where?* EB4
When? Break B

THURSDAY

KEYBOARD CLUB

Who? All years | *Where?* PA2
When? 3-4pm

GIRLS FOOTBALL

Who? Years 7, 8 & 9 | *Where?* Astro
When? 3.10-4pm

STEAM

Who? All years | *Where?* CT1
When? 3.10-4pm

PRODUCTION ACTING

Who? All years | *Where?* Theatre
When? 3.10-5pm

PRODUCTION DIGITAL MARKETING

Who? All years | *Where?* CT3
When? 3.10-4pm

MEDIA CLUB

Who? Years 7-10 | *Where?* VA5
When? 3.10-4pm

LGBTQIA+ CLUB

Who? All years | *Where?* EN2
When? Break B

FOOTBALL

Who? Years 8 | *Where?* Sports hall
When? 3.10-4pm

FRIDAY

FURTHER MATHS

Who? Year 11 set 1s only | *Where?* TBC
When? 3-4pm

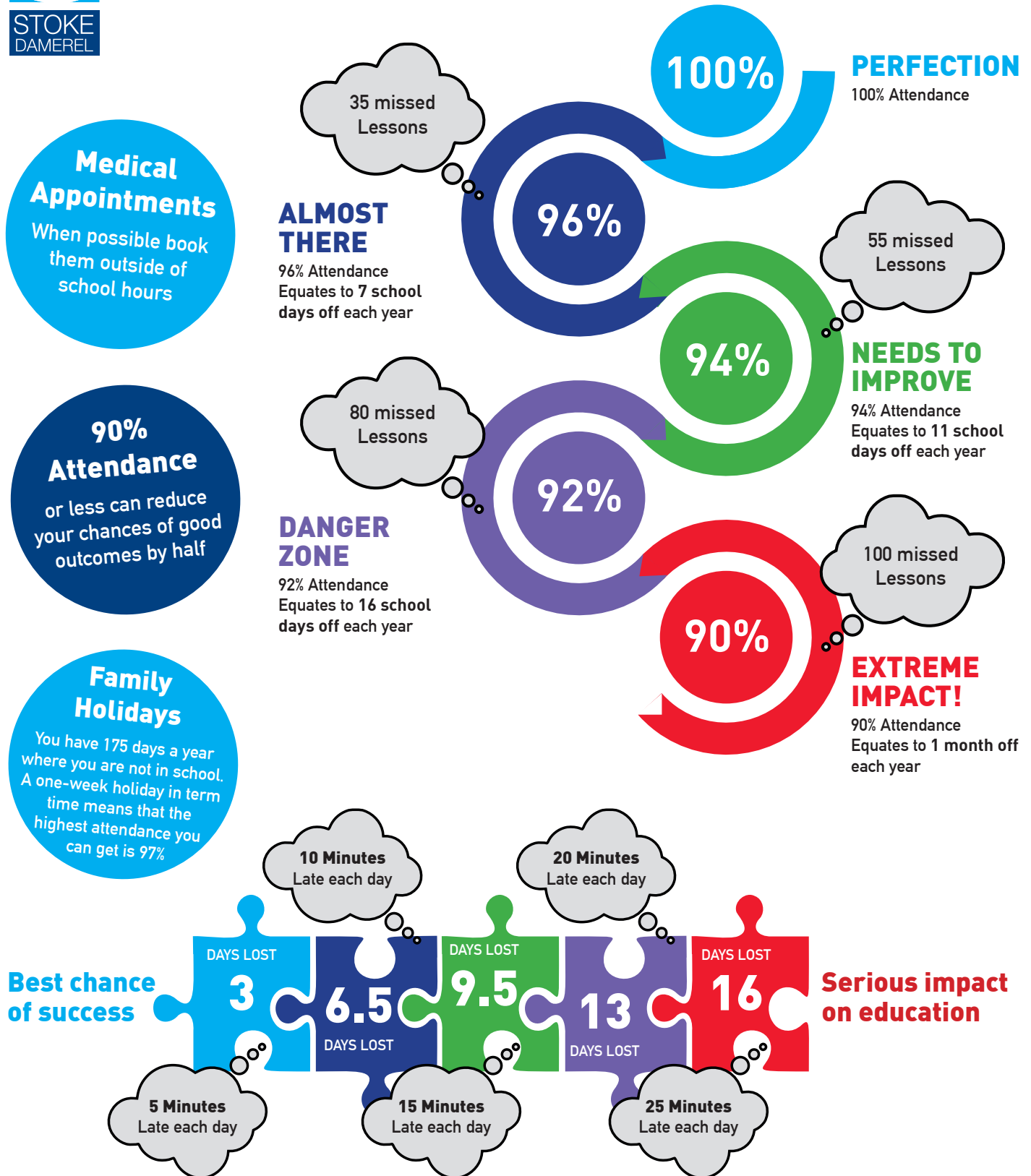
BOOK CLUB

Who? KS3 | *Where?* Library
When? Break A

Aspire **ACHIEVE** Thrive

Attendance Matters

#EVERYDAYCOUNTS



Average learning hours per day is 5 hours.
If you are 15 minutes late each day you will have missed 2 full weeks of school in 1 year!