



Strategic Planning and Infrastructure

Plymouth City Council  
Ballard House  
Plymouth PL1 3BJ  
T 01752 307762  
E [jacqueline.keith@plymouth.gov.uk](mailto:jacqueline.keith@plymouth.gov.uk)  
[www.plymouth.gov.uk](http://www.plymouth.gov.uk)

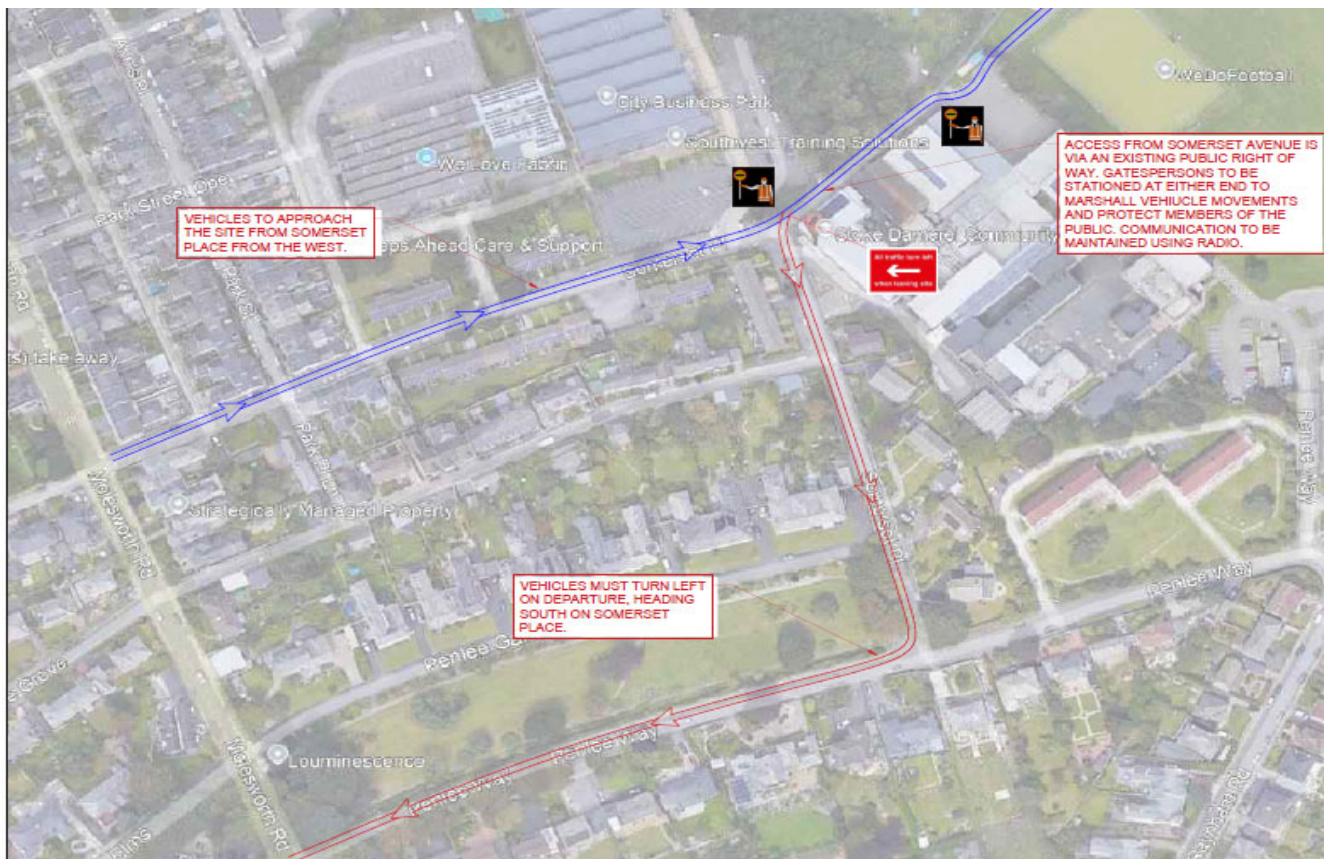
To The Householder

12<sup>th</sup> November 2024

**Re: Construction Works at Stoke Damerel Community College Sports Field – Planning Reference 23/01596/FUL**

Earlier this summer we wrote to you to notify of the works commencing at Stoke Damerel Community College on 27 August 2024.

At that time, we advised you that all deliveries to the site would be made via Penlee Way. Since then, the contractor has undertaken further surveys and have confirmed that the deliveries of the stone and tarmac will now be entering the site via Somerset Place and exiting via Penlee Way, as shown below in map below:



OFFICIAL

The stone deliveries will take place between Thursday 21 November and Friday 20 December. Due to the volume of materials involved in the project, there will be around 30 deliveries a day between 8.45 am – 2.45 pm Monday to Friday and Saturday 09.00 am - 2.00 pm.

Tarmac deliveries will begin in January and February also between 8.45 am - 2.45 pm Monday to Friday.

To mitigate for the change in arrangements, two banksmen will be located at the school gate and at the site entrance to direct the movement of vehicles and ensure a safe and efficient flow of traffic around the site.

There will be no deliveries to the site on weekdays before 8.45 am and from 2.45 pm, and on Sundays and Bank Holidays

We apologise for the disruption and would really appreciate your co-operation in this matter to ensure that these works go quickly and efficiently.

If you have any queries or concerns, please contact Jackie Keith – Plymouth City Council Project Manager on 01752 307762 or [jacqueline.keith@plymouth.gov.uk](mailto:jacqueline.keith@plymouth.gov.uk)

Yours sincerely

J A Keith

**Plymouth City Council**